
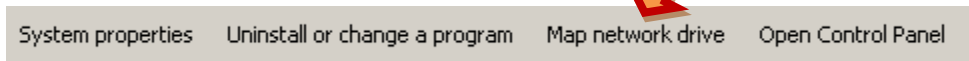


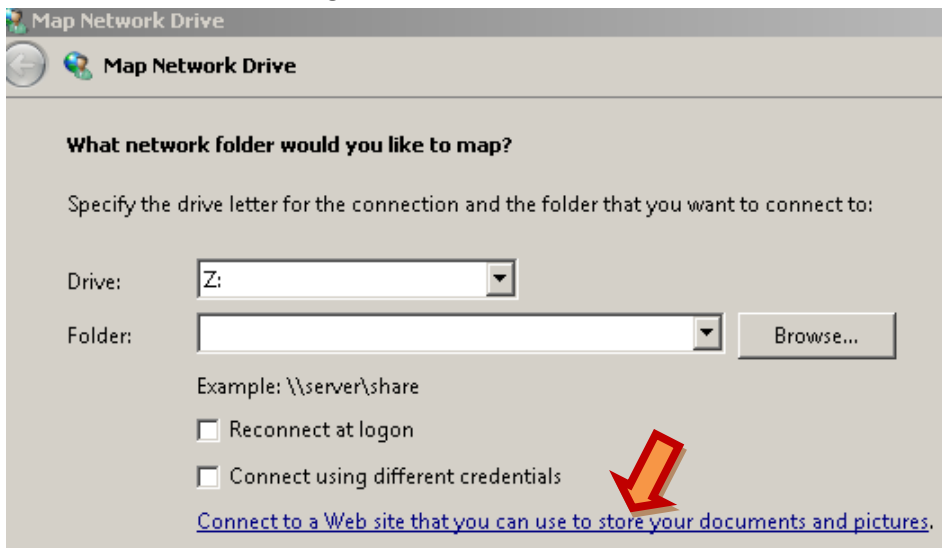
How to map to a FTP in Windows 7

1. Click on  , select **Computer** from the list

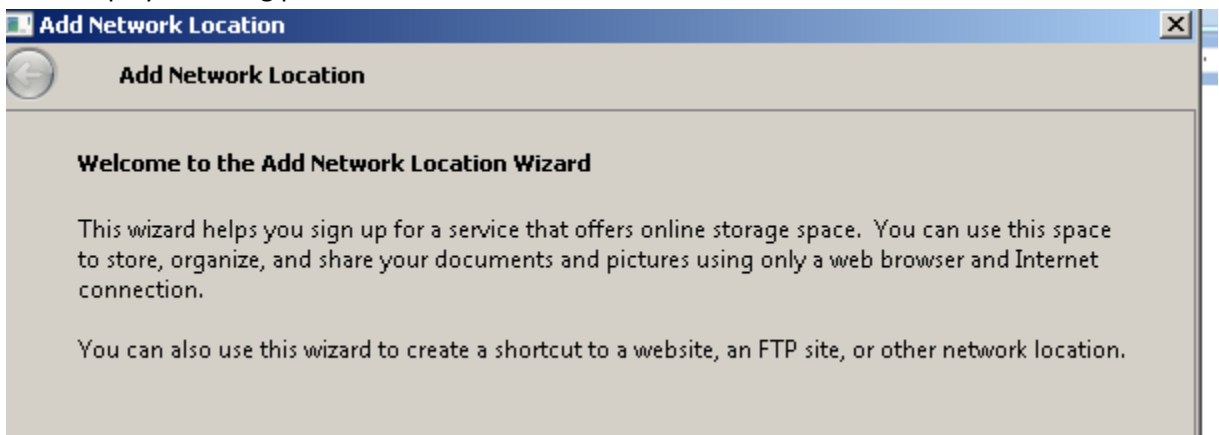
2. Click on **Map network Drive**



3. Make sure “reconnect at logon” is not checked . **Click on item shown with arrow**

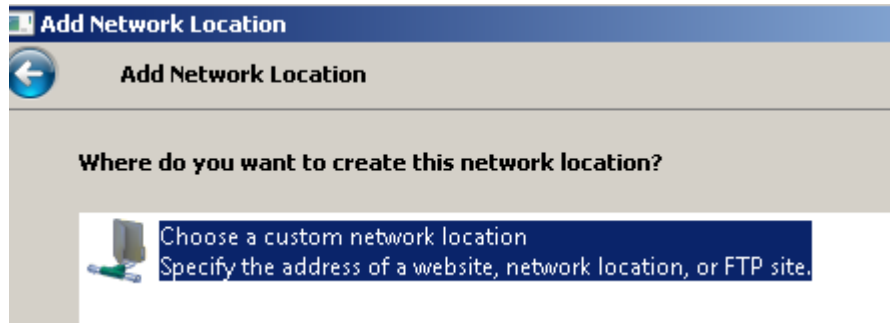


4. It will display following panel



Click **Next**

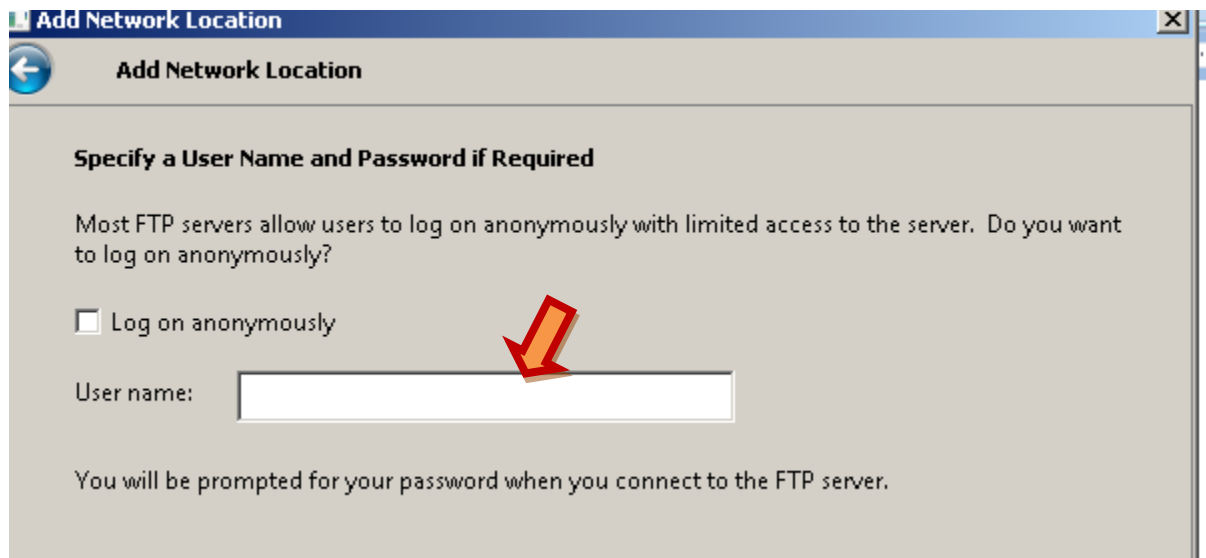
5. Following panel will be displayed. Select the item says “choose a custom network location” and click **Next**



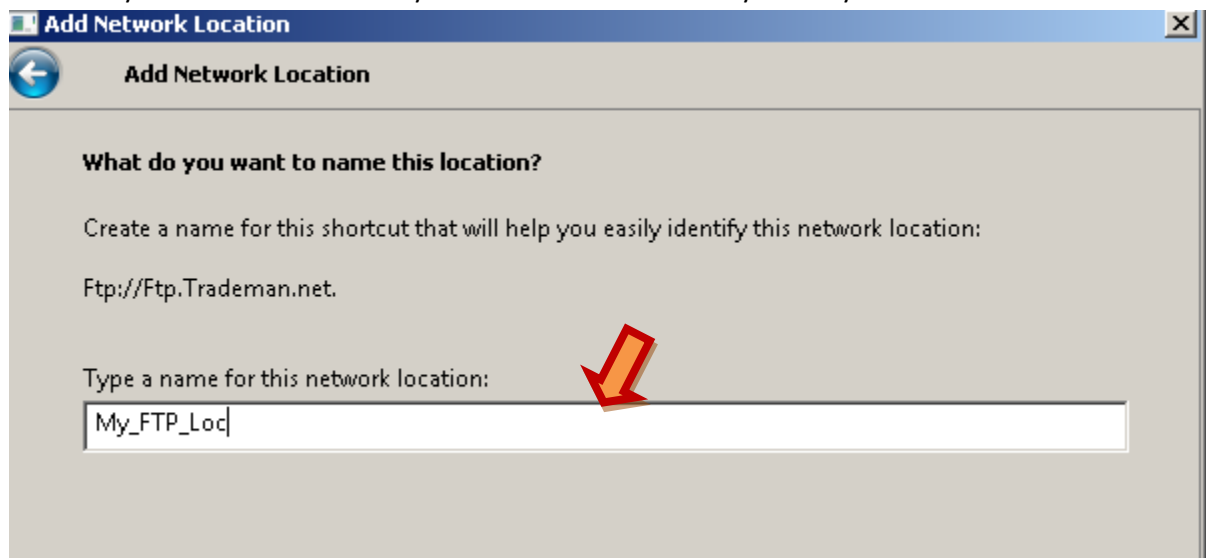
6. It will bring up following panel. Enter your ftp URL in the address box and click **Next**



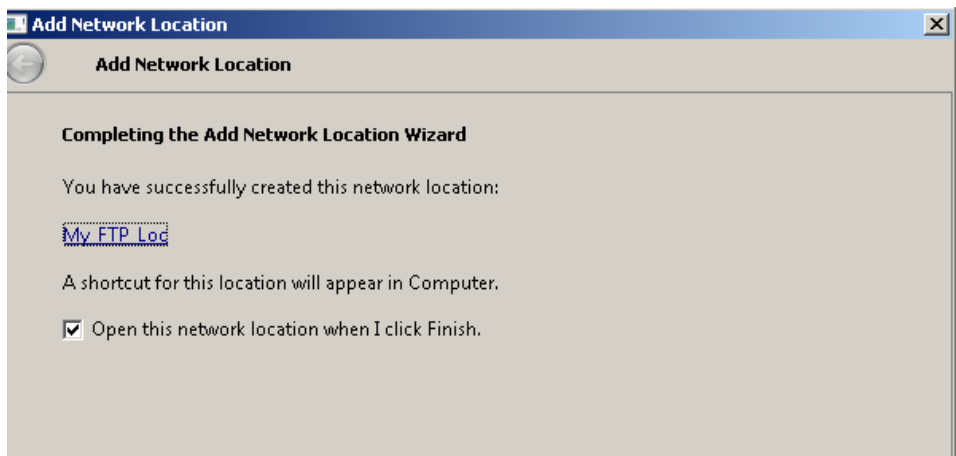
7. It will bring following panel . If the FTP server allows you to connect anonymously then click **Next** otherwise uncheck “log on anonymously” and enter a valid User name then click Next



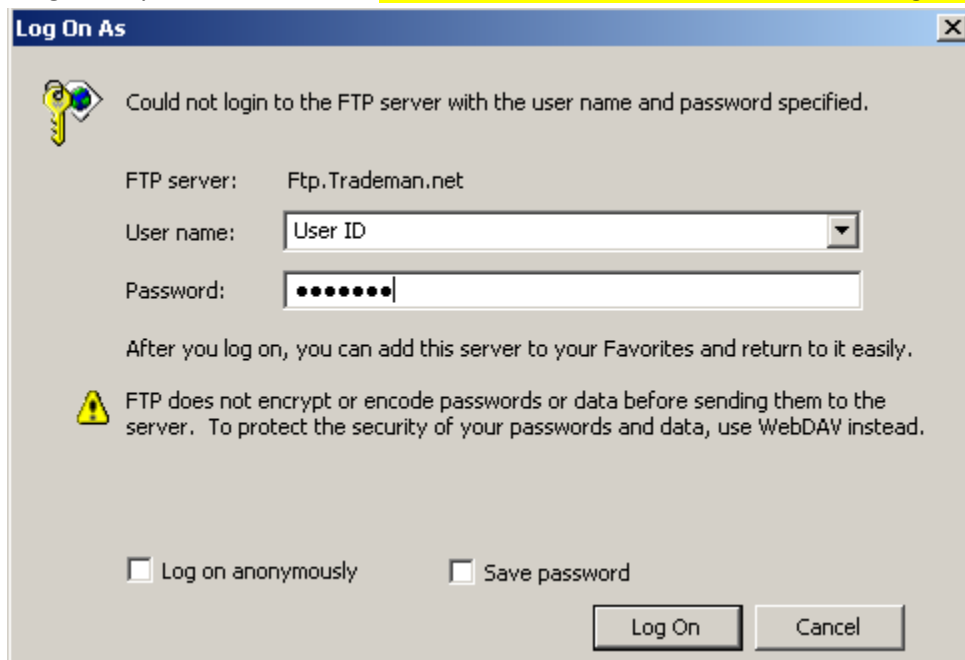
8. It will ask you to enter a name for your FTP location. Enter any name you like



9. Click Finish on the following screen



10. I might ask you for Credentials. Enter User name and Password and click Log On



11. If Everything worked fine it will bring up your FTP site.

12. Now if you go to Windows Explorer you should see your mapped FTP location

